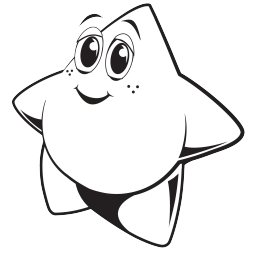


# Story Card 1

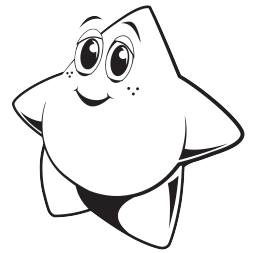
**Ages 2-3**  
The First Sin



God's beautiful garden had one rule:  
Don't eat fruit from the tree in the middle.

# Story Card 1

**Ages 2-3**  
The First Sin



God's beautiful garden had one rule:  
Don't eat fruit from the tree in the middle.



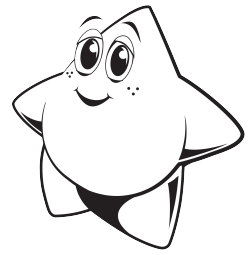
God's beautiful garden had one rule:  
Don't eat fruit from the tree in the middle.



God's beautiful garden had one rule:  
Don't eat fruit from the tree in the middle.

# Story Card 2

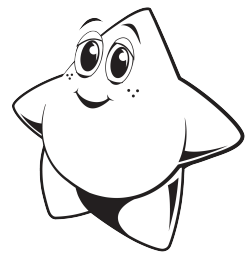
**Ages 2-3**  
The First Sin



The evil serpent tricked Adam and Eve.  
Adam and Eve listened to him and ate the fruit.

# Story Card 2

**Ages 2-3**  
The First Sin



The evil serpent tricked Adam and Eve.  
Adam and Eve listened to him and ate the fruit.



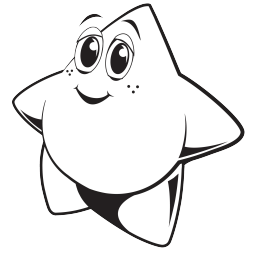
The evil serpent tricked Adam and Eve.  
Adam and Eve listened to him and ate the fruit.



The evil serpent tricked Adam and Eve.  
Adam and Eve listened to him and ate the fruit.

# Story Card 3

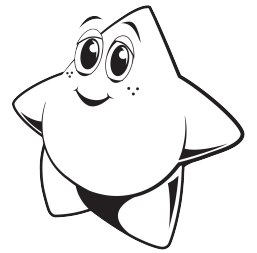
**Ages 2-3**  
The First Sin



Adam and Eve didn't obey God.  
They had to leave God's beautiful garden forever.

# Story Card 3

**Ages 2-3**  
The First Sin

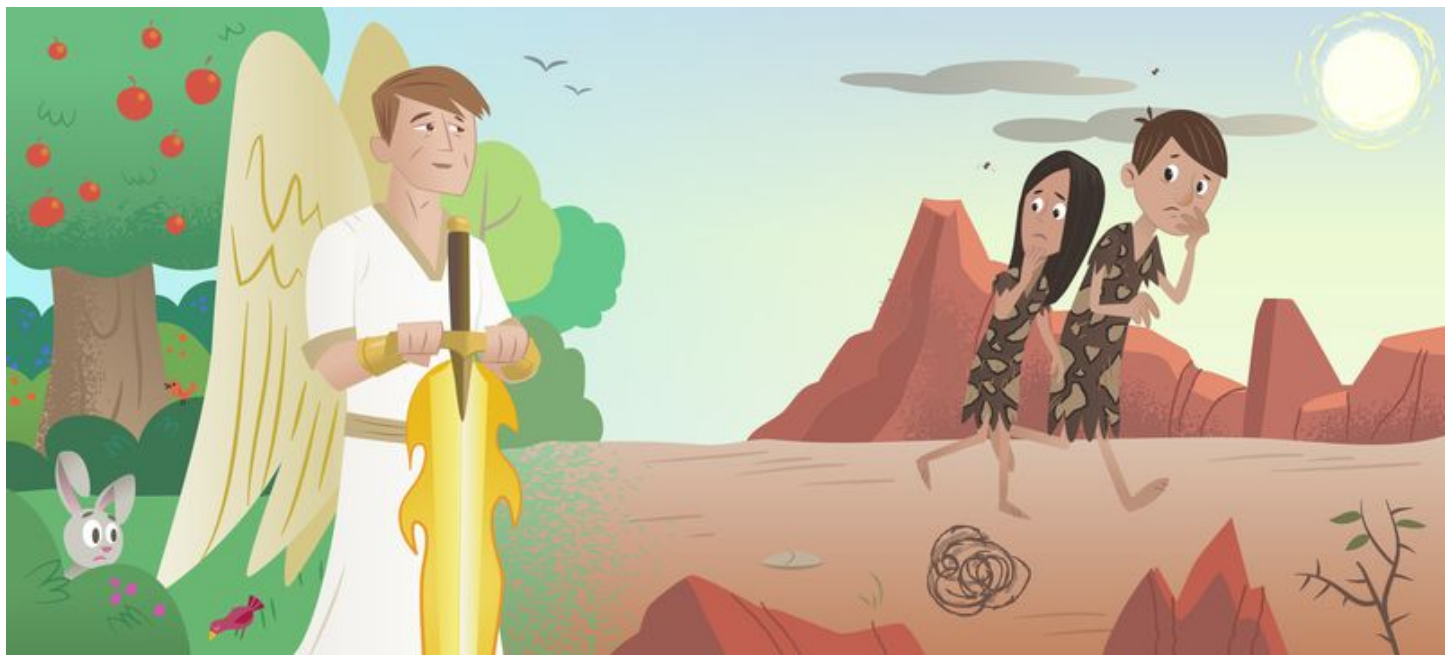


Adam and Eve didn't obey God.  
They had to leave God's beautiful garden forever.





Adam and Eve didn't obey God.  
They had to leave God's beautiful garden forever.



Adam and Eve didn't obey God.  
They had to leave God's beautiful garden forever.